



# bb bio-bottle

Providing a range of products developed to carry infectious substances and biological specimens in a safe manner for all transport modes,



Nearly 25 years ago bio-bottle was established out of a customer enquiry for infectious substance packaging. At the time options were scarce and very expensive. We stepped up to the challenge and created the Orange bio-bottle – an affordable, customer-focused solution to the client's specific requirements.

Fast forward and this one product has grown to include a range of rigid, flexible and temperature-controlled solutions using phase change technology (check out the ultra-freeze Plus offering below 0°C for 168+ hours (7 days) without dry ice!).

Our products are specifically designed for Category A and Category B infectious substances, pharmaceutical products and other specialist diagnostic consignments. Reflective of our company roots, we love a challenge - so if you don't see a product to suit your needs please reach out and allow us an opportunity to present a customised solution for you.

Although we are New Zealand based, we have an international network of distributors are ready to help - please email [sales@bio-bottle.com](mailto:sales@bio-bottle.com) for support and assistance.

Our shared values:  
Customer-Focused Solutions / Employee Orientation /  
Entrepreneurial Spirit / Integrity / Continuity

#togetherwithpassion we hope to be your partner of choice.



## RED

Combination package for the shipment of ambient infectious specimens and biological substances (all risk groups).

UN specification packaging, 95 kPa independently tested and approved.



Capacity:	0.5L
Height:	165mm
Diameter:	75mm
Opening:	49mm
Complete weight:	0.18kg
Bottle only weight:	0.08kg

## BLUE

Combination package for the shipment of ambient infectious specimens and biological substances (all risk groups).

UN specification packaging, 95 kPa independently tested and approved.



Capacity:	0.85L
Height:	165mm
Diameter:	95mm
Opening:	70mm
Complete weight:	0.22kg
Bottle only weight:	0.14kg

## ORANGE

Combination package for the shipment of ambient infectious specimens and biological substances (all risk groups).

UN specification packaging, 95 kPa independently tested and approved.



Capacity:	2.5L
Height:	230mm
Diameter:	120mm
Opening:	80mm
Complete weight:	0.320kg
Bottle only weight:	0.240kg

## YELLOW

Combination package for the shipment of ambient infectious specimens and biological substances (all risk groups).

UN specification packaging, 95 kPa independently tested and approved.



Capacity:	3.0L
Height:	245mm
Diameter:	150mm
Opening:	110mm
Complete weight:	0.480kg
Bottle only weight:	0.480kg



This product is a combination package for the shipment of temperature sensitive infectious specimens and biological substances (all risk groups) and the shipment of temperature sensitive of non-hazardous materials.

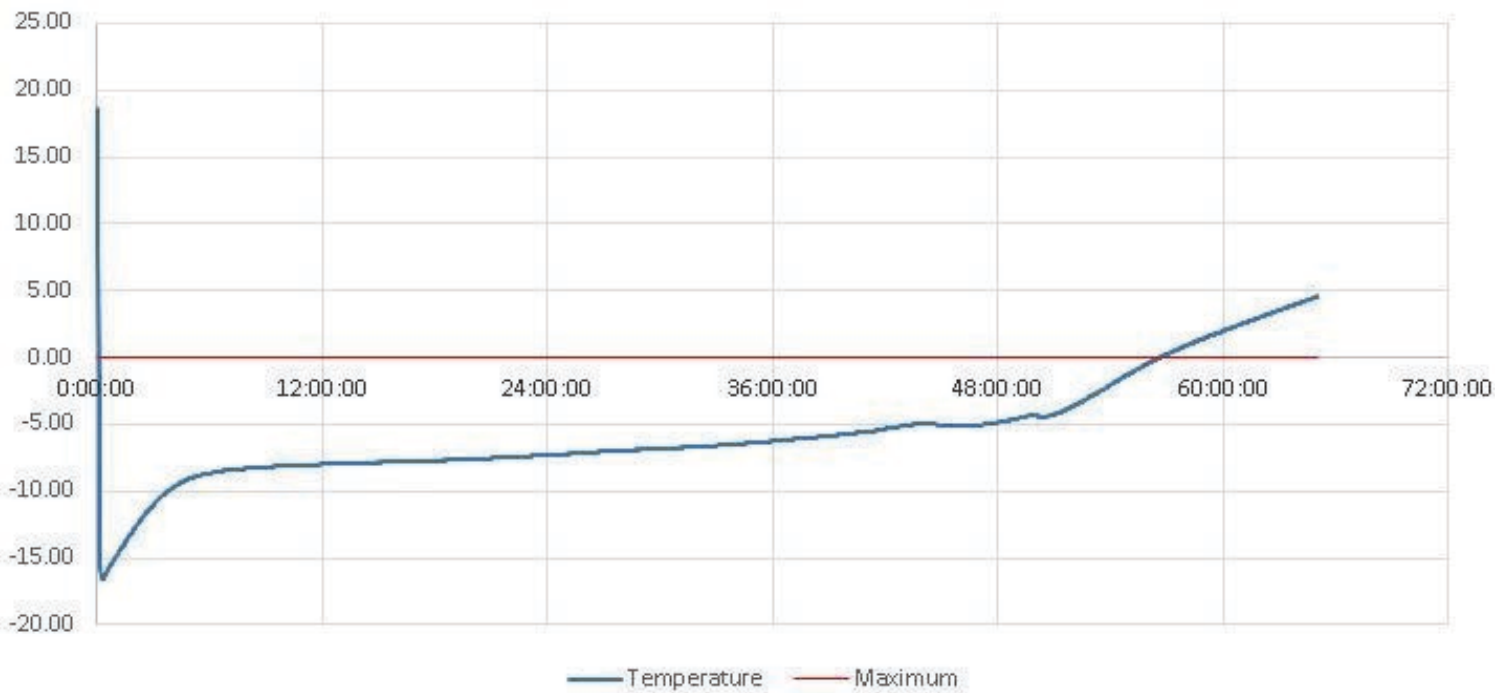
UN specification packaging, 95 kPa independently tested and approved.

Temperature range: between -20°C to 0°C for 48+ hours



Capacity:	1.0L
Height:	245mm
Diameter:	150mm
Opening:	110mm tapering to 75mm
Complete weight:	2.82kg

bio-freeze



The background of the entire page is a light blue pattern of interconnected hexagons and dots, resembling a molecular or network structure. The dots are of varying sizes and are connected by thin lines, creating a complex, web-like appearance.

**uf** ultra-freeze

# COMPLETE

This product is a combination package for the shipment of temperature sensitive infectious specimens and biological substances (all risk groups) and the shipment of temperature sensitive non-hazardous materials. With no dry ice required the ultra-freeze Complete may be transported by airfreight as non-hazardous cargo resulting in significant cost savings.

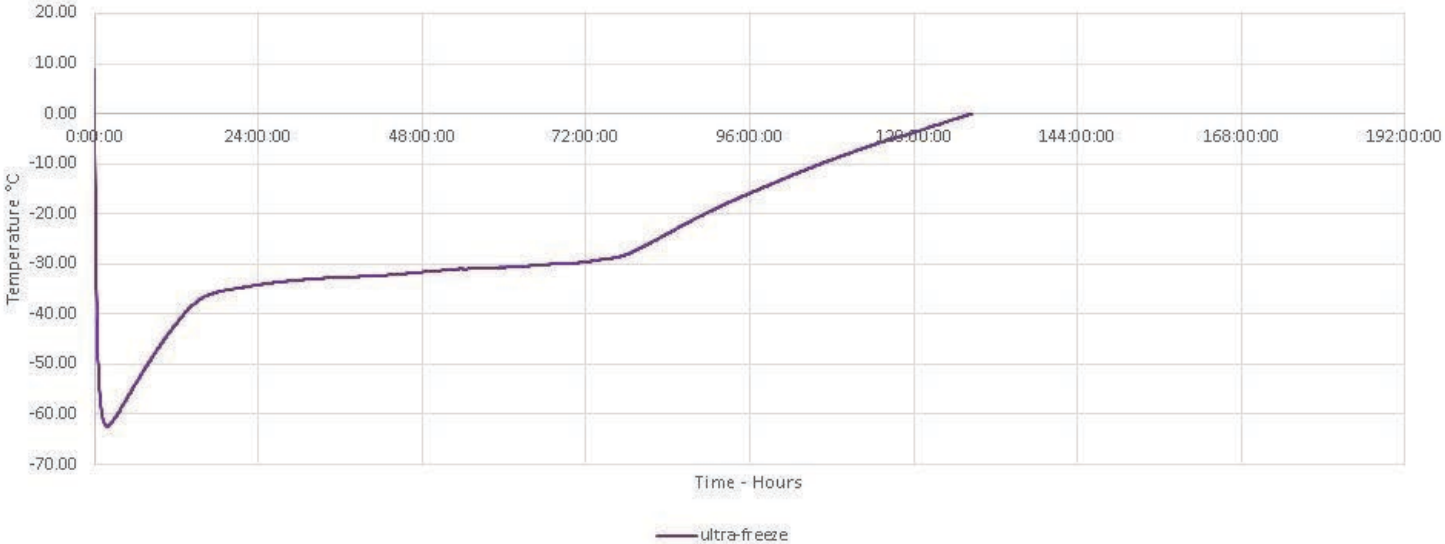
UN specification packaging,  
95 kPa independently tested  
and approved.

Temperature range: between  
-80°C to -20°C for 72 hours,  
and below 0°C for 100+ hours



Capacity:	3.0L
Height:	245mm
Diameter:	150mm
Opening:	110mm
Complete weight:	14.68kg

uf ultra-freeze





# MAX

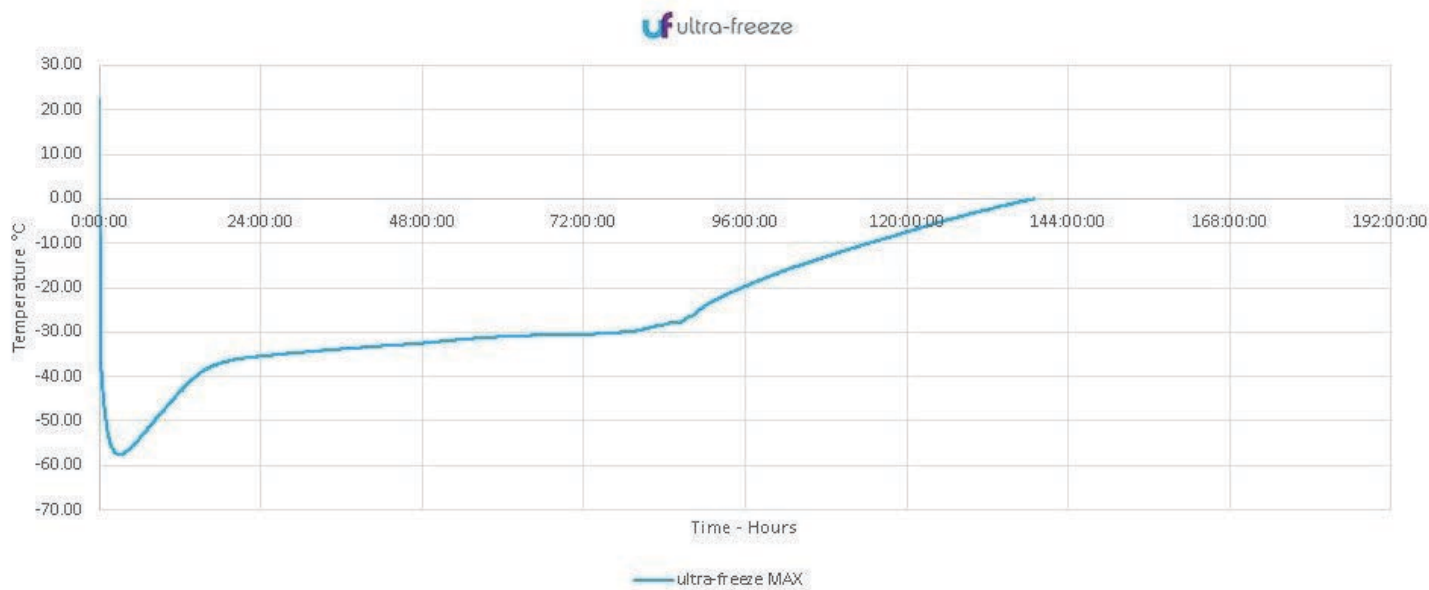
This product is a combination package for the shipment of temperature sensitive infectious specimens and biological substances (all risk groups) and the shipment of temperature sensitive non-hazardous materials. With no dry ice required the ultra-freeze MAX may be transported by airfreight as non-hazardous cargo resulting in significant cost savings.

UN specification packaging,  
95 kPa independently tested  
and approved.

Temperature range: between  
-80°C to -20°C for 96 hours,  
and below 0°C for 120+ hours



Capacity:	1.0L
Height:	245mm
Diameter:	150mm
Opening:	110mm tapering to 75mm
Complete weight:	16.50kg



# PLUS

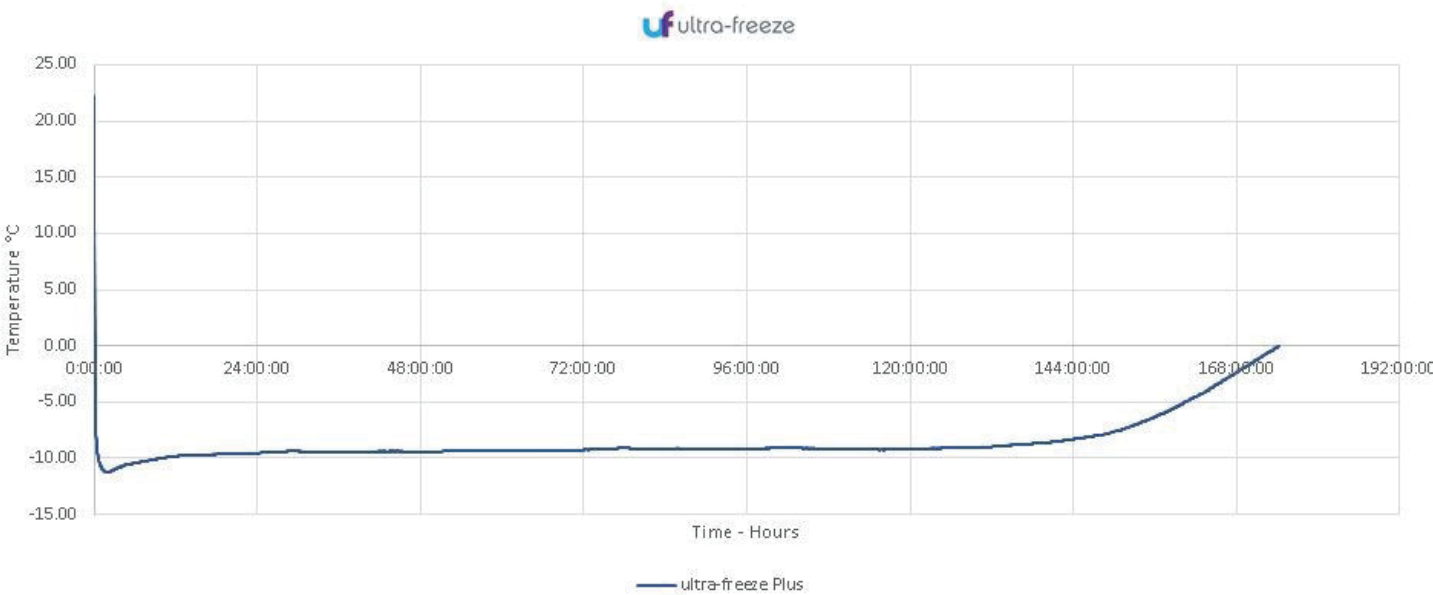
This product is a combination package for the shipment of temperature sensitive infectious specimens and biological substances (all risk groups) and the shipment of temperature sensitive non-hazardous materials. With no dry ice required the ultra-freeze Plus may be transported by airfreight as non-hazardous cargo resulting in significant cost savings.

UN specification packaging,  
95 kPa independently tested  
and approved.

Temperature range: between  
-20°C to 0°C for 168+ hours  
(7+days)



Capacity:	3.0L
Height:	245mm
Diameter:	150mm
Opening:	110mm
Complete weight:	14.20kg



The background of the entire page is a light blue pattern of interconnected hexagons and dots, resembling a molecular or network structure. The hexagons are outlined in a slightly darker blue, and the dots are small circles of varying shades of blue and green.

**bp** bio-pouch



This product is a liquid tight flexible secondary package for the shipment of biological substances. Withstanding the differential pressure of 95 kPa the bio-pouch is made with a custom film structure that features a strong adhesive closure and continuous seal. Tested and approved for as a single use shipper only. This product is also available in a complete shipment kit.

## Available in

**bp bio-pouch | 2nz**

Product Code: 2NZP1

Case Quantity:	700
Opening:	140mm / 5.5" (Width)
Internal dimensions:	153 x 228 mm / 6 x 9" (Width x Length)
*Measurements are approximate	

**bp bio-pouch | 5nz**

Product Code: 5NZP1

Case Quantity:	300
Opening:	200mm / 7.9" (Width)
Internal dimensions:	235 x 260 mm / 9 x 12" (Width x Length)
*Measurements are approximate	

**bp bio-pouch | 10nz**

Product Code: 10NZP1

Case Quantity:	250
Opening:	242mm / 9.5" (Width)
Internal dimensions:	260 x 355 mm / 10 x 14" (Width x Length)
*Measurements are approximate	

**bp bio-pouch | 25nz**

Product Code: 25NZP1

Case Quantity:	100
Opening:	320mm / 12.5" (Width)
Internal dimensions:	332 x 455 mm / 13.01 x 18" (Width x Length)
*Measurements are approximate	



# bp bio-pouch COMPLETE



The bio-pouch complete transportation kit meets all domestic and international regulations (Class 6.2, Packing Instructions 620 & 650) for road, ocean and air transportation of diagnostic and infectious substances.

The bio-pouch is made from laminated LLDPE, is leak-proof and is 95 kPa pressure tested. The sealing method means the bio-pouch is a single-use transportation system.

## Contents:

- 1 x bio-pouch
- 1 x Absorbent cushioning pad
- 1 x Class 6.2 label
- 1 x UN 3373 label
- 1 x Bubble wrap pouch
- 1 x Outer fiberboard die-cut box

## Available in

bp bio-pouch | 5nz  
COMPLETE



bp bio-pouch | 10nz  
COMPLETE



bp bio-pouch | 25nz  
COMPLETE



**QUOTATION REQUEST / ORDER FORM:**

☎ +64 9 275 5559

✉ [sales@bio-bottle.com](mailto:sales@bio-bottle.com)

 [www.bio-bottle.com](http://www.bio-bottle.com)

### YOUR INFORMATION:

Name:	PO#:
Company:	Email:
	Phone:

**BILLING ADDRESS:**

Address: \_\_\_\_\_

City: \_\_\_\_\_

Country: \_\_\_\_\_

State: \_\_\_\_\_

Zip: \_\_\_\_\_

**SHIPPING ADDRESS:**

Address: \_\_\_\_\_

City: \_\_\_\_\_

Country: \_\_\_\_\_

State: \_\_\_\_\_

Zip: \_\_\_\_\_

**DESCRIPTION:****TOTAL:**[illegible]



PO Box 53-003,  
Auckland Airport, 2150  
New Zealand



+64 9 275 5559



[sales@bio-bottle.com](mailto:sales@bio-bottle.com)



[www.bio-bottle.com](http://www.bio-bottle.com)